



# FUNDRAISING PLEDGE



*Everyone can make a difference*

*We invite businesses, groups, clubs, families, and individuals to pledge their support by fundraising for one of the following hospice needs during 2025.*

**£750**

## PODCAST

Fund an episode the "Life & Loss" podcast series, offering crucial support and guidance for those facing life-limiting illnesses or coping with grief.



**£2,160**

## COFFEE CART

Fund a coffee cart for 12 months to provide fresh coffee to patients, visitors, and the dedicated staff at the hospice.



## NEWSPAPERS FOR PATIENTS

**£2,796**



**£12K**

## MOTOR NEURONE DISEASE

Fund a MND Co-ordinator to support people with MND and their families from diagnosis onwards. They provide information, symptom control advice, psychological support and co-ordination of the other services a person with MND may need.



**£15K**

## COMPLEMENTARY THERAPIST

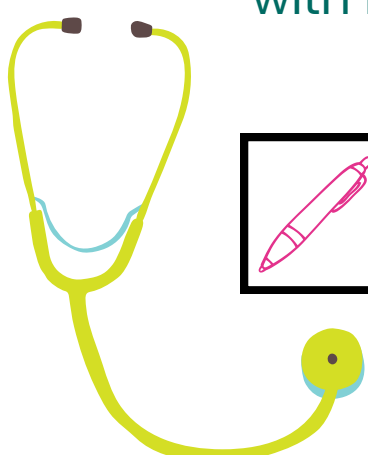
Fund a Complementary Therapist, offering therapies like massage, aromatherapy, and reflexology to palliative and cancer care patients.



**£40K**

## COMMUNITY NURSE

Fund a vital community nurse specialist providing expert palliative care, support, and symptom management to patients with life-limiting illnesses.



## LIVING WITH LOSS

**£1K**




Fund regular sessions that include a 45 minute talk from a qualified bereavement therapist who will discuss the process of grief and the support available.



£40K

## BEREAVEMENT COUNSELLOR

Fund a Bereavement Counsellor who provides essential support for individuals coping with loss. Through a safe and confidential space, this role helps people navigate their grief, explore their emotions, and find ways to manage feelings.

	£13,333
	£13,333
	£13,333



## BEREAVEMENT SUPPORT GROUPS

£6K





Fund Forest Holme's Bereavement Befriender service, Bereavement Café, and social support groups, providing a compassionate space for those grieving to share their experiences, find support, and connect with others who understand their loss.

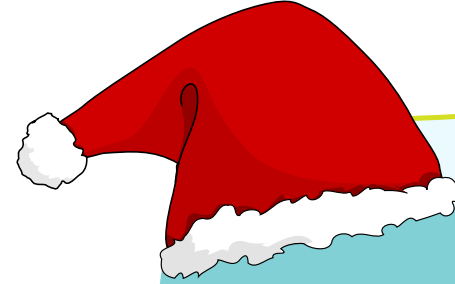


£31,000

## HOSPICE AT HOME

Your generous pledge will fund a month of compassionate Hospice at Home care, providing vital support and comfort to patients and families in their time of need.

	£31,000
	£31,000
	£31,000
	£31,000



## 12 DAYS OF CHRISTMAS

£2K

Fund 12 days of Christmas surprises at Forest Holme Hospice, including live entertainment, a therapy donkey visit, and gifts, bringing joy and comfort to patients and their families





£8K

## CLINICAL STAFF TRAINING & DEVELOPMENT

Fund training and development opportunities for our palliative care staff, ensuring our team is equipped with the latest knowledge and skills to provide the highest quality care to our patients.



£2,400

## YOGA FOR CANCER PATIENTS

Fund weekly yoga sessions for patients during and post Cancer treatment.





£490

## THINKING OF YOU CARDS & POSTAGE



£3K

## STAFF CHRISTMAS PARTY





# THANK YOU FOR YOUR SUPPORT

These items represent just a glimpse of what Forest Holme Hospice Charity supports. If donations exceed the target for any item, the additional funds will be redirected to other charitable needs at Forest Holme