

# WHAT WE FUND

## HOSPICE AT HOME

We fund Hospice at Home care in Poole and surrounding areas, providing **£400,000** this year to deliver personalised, high-quality end-of-life care for those who wish to spend their final days at home.



Even though you might not need us today, your support will enable us to be there if you, or a loved one, ever need us in the future.

## COMMUNITY PALLIATIVE CARE NURSES

We fund nurses in the Community Palliative Care team who provide care and support to patients with serious, life-limiting illnesses in their own homes.



## COMPLEMENTARY THERAPY

We provide funding for complementary therapy treatments, including Reiki, Aromatherapy, Reflexology, and Emotional Freedom Techniques (EFT), specifically for cancer patients and individuals unable to verbalise their grief due to physical tension.



## MOTOR NEURONE DISEASE CO-ORDINATOR

We part fund a MND Co-ordinator to support people with MND and their families from diagnosis onwards.



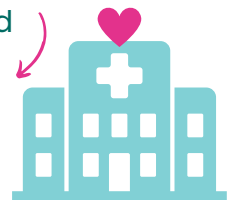
## PODCAST SERIES

Helping those navigating grief and living with life-limiting illnesses.



## HOSPITAL PALLIATIVE CARE

We part fund a Hospital Palliative Care Nurse Specialist.



## COUNSELLING AND BEREAVEMENT SUPPORT

We fund counsellors plus additional bereavement support through books, literature and various groups including Living with Loss and four Bereavement Cafés per month.



## IN PATIENT WARD

We fund a Physiotherapist and a Therapies Technician.



## STAFF WELFARE

We fund training and development, clinical supervision, wellbeing support and staff treats.



## SUSTAINABILITY

We fund initiatives to help make the hospice more sustainable.



## PATIENT WELFARE

We fund bespoke patient requests plus a ward drinks trolley, toiletries, weddings and special occasions.



## FIXTURES & FITTINGS

We fund equipment, tv licences, furniture, refurbishments, maintenance and window cleaning.

